

Our Impact

Center for Regional Economic Innovation

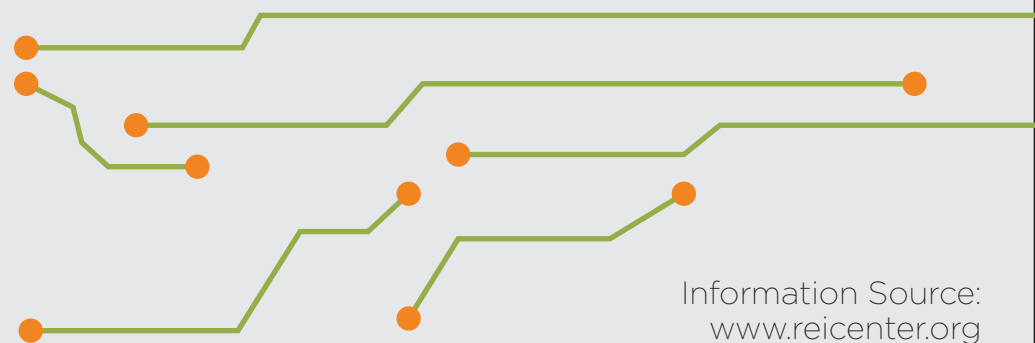
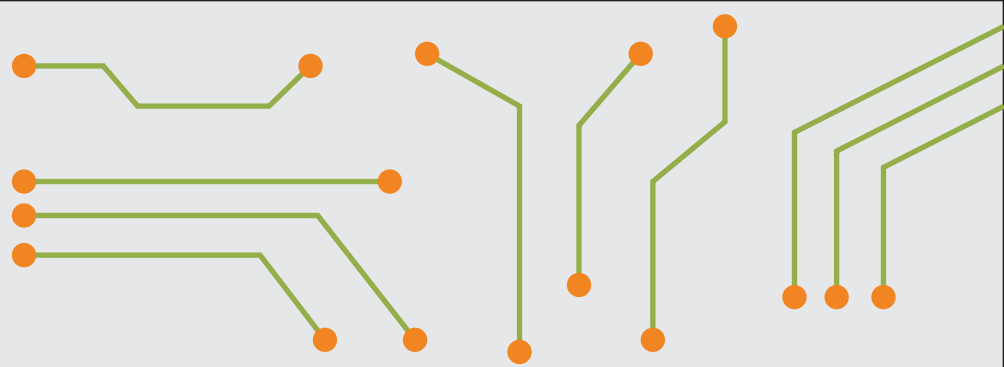


Each year, the REI Center at Michigan State University sponsors research for economic innovation that will help spur job growth, business development, and help local municipalities. These projects are pitched by individuals with an array of background to a panel of educators, policymakers, and business people. After all research projects have concluded, the leaders and innovators from across the state gather at the *Innovate Michigan!* Summit to listen and discuss different solutions.

“REI is a fantastic partner helping us help inventors and entrepreneurs in Michigan cities and in the rural areas find pathways to succeed. There is no better group in Michigan.”

“REI has given us a platform to speak our message and to bring innovators together. We are now showing inventors how to turn their inventions into reality, and by doing so, they are creating jobs.”

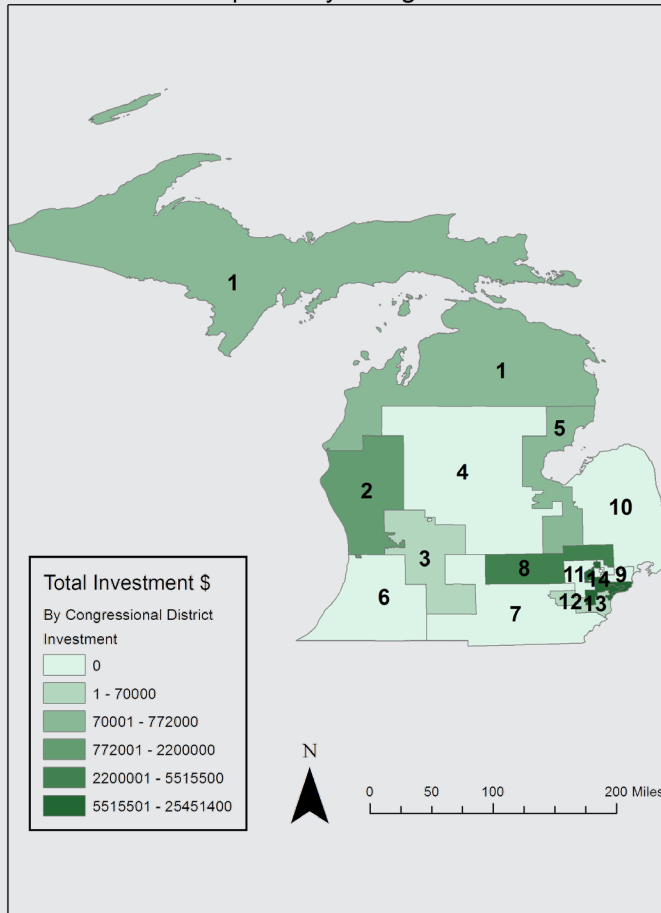
“Our co-implementation plan for supporting youth and emerging entrepreneurs, Flint City Pop-Up, was instrumental in providing proof of concept for our new community maker space.”



REI's Regional Impact



MSU EDA University Center
Investment Impacts by Congressional District



2013-2018

Michigan State University EDA *University Center for Regional Economic Innovation (REI)*

Our Mission

REI has been moving forward, building upon past success, stimulating innovative economic development in Michigan, for the most distressed communities of the state. REI's model provides responsive community engagement, strategic partnerships, and collaborative learning to support the creation and identification of collaborative regionally innovative tools, models, policies, and practices to improve access to capital for small businesses, increase job skill development, improve infrastructure, increase high-growth entrepreneurship, increase global competitiveness, and strengthen underserved communities and historically excluded citizens.

“ 57 small businesses have accessed resources and trainings (videos) supported through the REI project. ”