




The background features a dark blue and black interface with various financial data points and a line chart. Visible text includes 'OMX18', 'OMX ICELAND 8', '6230.9', 'Sell', '1172.94', '0.81%', '27956.04', 'Buy', '28289.06', '599.40', 'OMX18', 'OMX ICELAND 8', '6025.9680', '5993.7030', 'Buy', 'INDEX', 'INDEX ICELAND 8', '984.13', '0.87%', 'BUY', '10847.17', 'Buy', '10916.69', '1172.94', '0.81%', 'BUY', and 'OMX18'. A red and white wavy graphic is on the left side.

MSU REI 2021 Fellowship Community Capital Accelerant

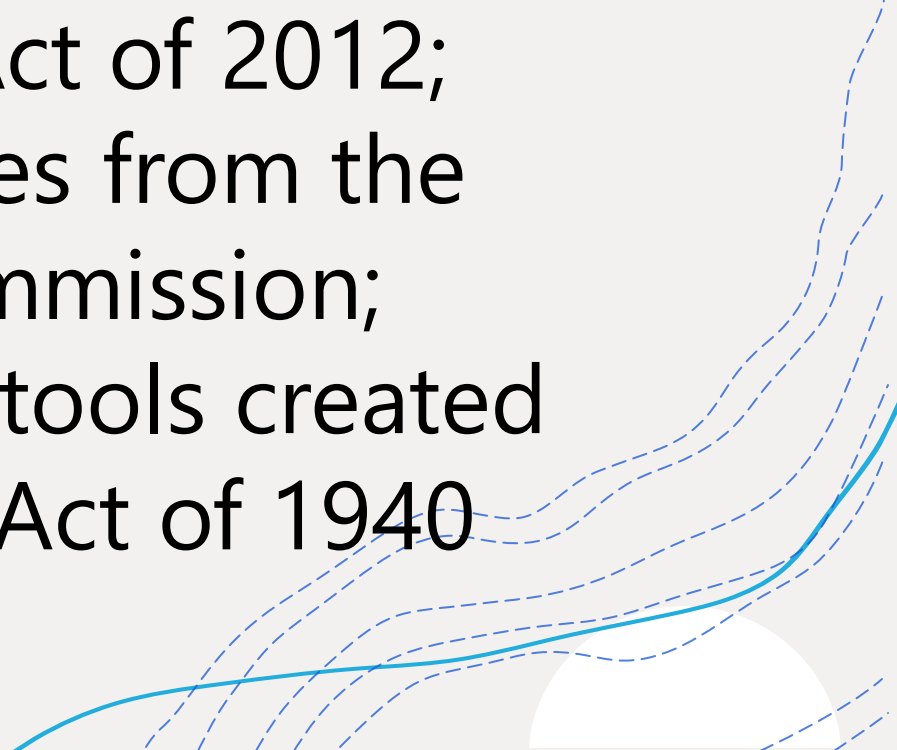
Christopher D. Miller


National Coalition for Community Capital

Special Projects Consultant, PlaneWave Instruments





Project Objective: Accelerate the local investing movement (Community Capital) in communities and projects across Michigan using tools made possible through the JOBS Act of 2012; policy and regulatory changes from the Securities and Exchange Commission; new state laws; and existing tools created in the Investment Company Act of 1940





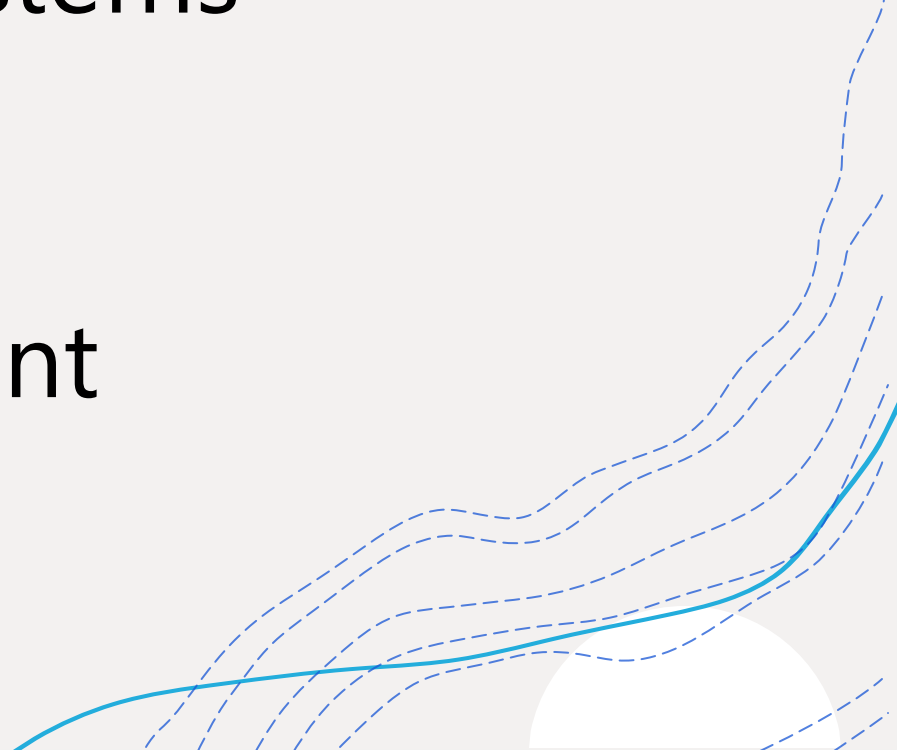
Methodology: Individual contact with project leaders and organizations who successfully completed donation crowdfunding campaigns; individual contact with organizations and individuals seeking capital for community-based projects





BIG (PLEASANT) SURPRISE:
OK, NOT ACTUALLY
PLEASANT, MORE LIKE
FANTASTIC!

Invitation to work on systems
that will accelerate and
endorse local capital
engagement by important
regional and statewide
organizations...



PROJECT SAMPLE

Durfee Innovation Society

- Community Center
- Education
- Workforce Development
- Entrepreneurship
- Human Services

- Next Project – Community Capital





PROJECT SAMPLE

- + **Downtown Saginaw Renos**
- + Successful filmmaker
- + Desire to return home
- + Targeted buildings
- + Renos on a shoe-string budget
- + Strong political backing
- + Traditional capital sources unsupportive
- + Community Capital next project

PROJECT SAMPLE

Sweet Encounter Bakery

- Lansing area baker
- Winner entrepreneurial contests
- Three profit centers business
- Broad community support
- Could include real estate
- SBA funding p/o capital stack

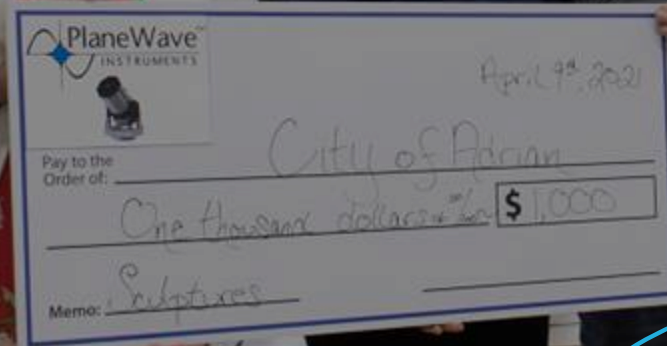
- Community Capital raise

+ My mom used to say I loved pots and pans more than I loved my toys," Thompson Frazier, 44, said. "I always played in the kitchen as a kid."

+ She never lost her passion for food, but it would be another three decades before Thompson Frazier would make a career out of it.

PROJECT SAMPLE

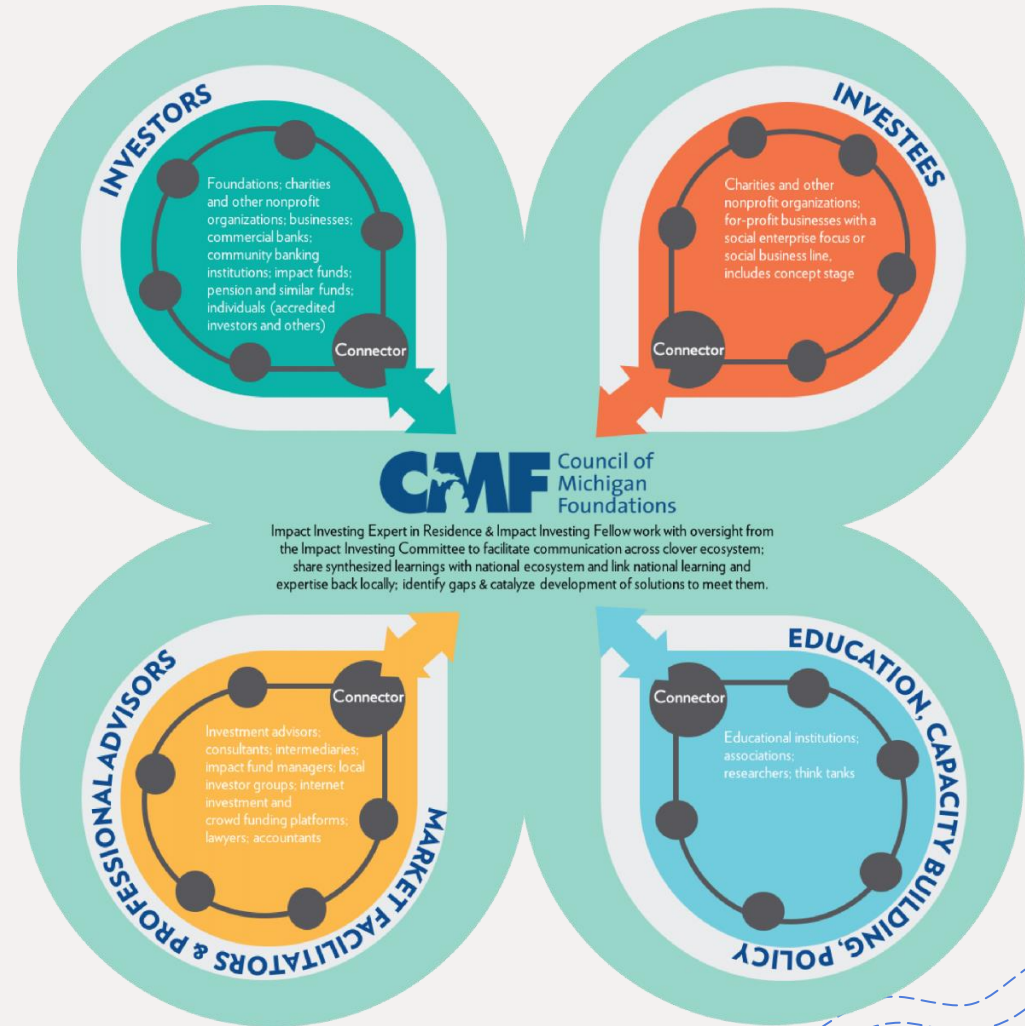
- + Existing successful business
- + High tech research telescope mfg
- + Relocated to MI from S. California
- + Committed to community
- + Growth opportunities
- + Fully able to secure traditional capital funding
- + Committed to partner with community for Community Capital raise



PROJECT SAMPLE

COUNCIL OF MICHIGAN FOUNDATIONS IMPACT INVESTING PROJECT

- Working in this space since 2013
- Desire to make meaningful local investments
- Desire to build awareness
- Working to build 'infrastructure'
- Stem and leaf structure
- Stem = CMF
- Leaves = Investors, investees, professional orgs, policy/educational orgs
- Connectors/facilitators connect stem and leaves



PROJECT SAMPLE

- + Reached out by EDO after contact from MEDC
- + Developing process for supporting entrepreneurs looking to start local businesses
- + Seeking capital sources
- + Multiple meetings discussing Community Capital
- + Partnering with national platform that provides opportunity for local investors to provide capital



OTHER ONGOING PROJECTS...

- * Detroit Artist Co-op building purchase
- * Washtenaw County – MEDC proposal
- * Housing North – insert Community Capital in capital stack
- * Michigan Inventors Coalition – investment crowdfunding competition
- * Presentation to Ross School of Business – University of Michigan
- * MI legislation
- * Recast City – small scale manufacturing & Community Capital
- * Northern Initiatives CDFI – non-accredited investors
- * ReValue – Grubstake revised
- * NC3 21st Century Community Investment Fund pilot(s)
- * Silicon Prairie Capital Partners – liquidity for non-accredited investors
- * Grand Rapids art center
- * Marshall MI project



Thank you!

Chris Miller

National Coalition for Community Capital
<https://comcapcoalition.org/>

chrismillermisuri2021fellow@gmail.com

49221christopherd@gmail.com

517.902.6100

